

Circular Economy Action Plan Overview

Net Zero Carbon Programme Update

Environment and Regeneration Scrutiny Committee

21 July 2022

Contents

- What is a circular economy and why is it important? (Page 3)
- Overview of Islington's Circular Economy Action Plan (Page 7)
- Delivery through the Net Zero Carbon Programme (Page 11)
- Next steps (Page 20)

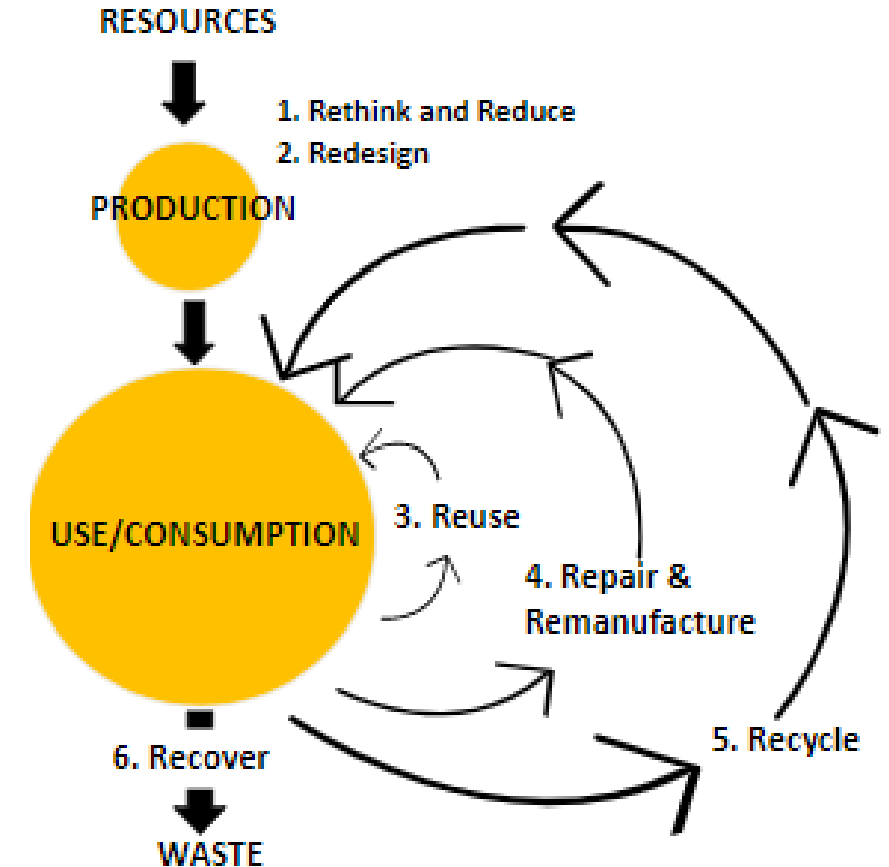
What is a circular economy and why is it important

A circular economy (CE) is an alternative to a linear 'take, make, dispose' economy and is based on three principles: eliminate waste and pollution, circulate products and materials, and regenerate nature.



Circular economy model

- The model (right) shows parts of a circular economy and examples of interventions at each point the cycle.
- (1) Rethink and reduce e.g. Library of Things
- (2) Redesign e.g. new homes design guide
- (3) Repair & remanufacture e.g. repair cafes
- (4) Reuse e.g. Dress for Success
- (5) Recycle e.g. bulky item recycling
- (6) Recover e.g. energy from waste (last resort)

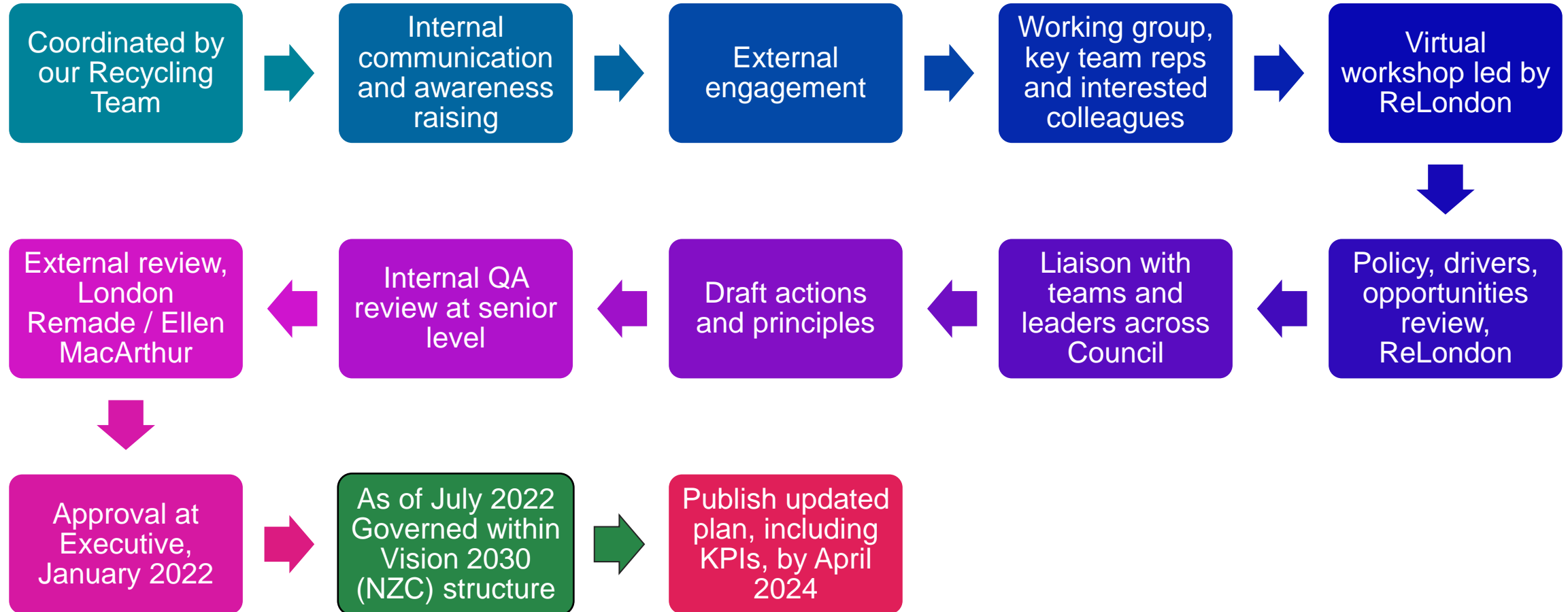


A circular economy tackles consumption based emissions

- Islington generates an estimated **two million tonnes of consumption based CO2 emissions per year** (also known as scope 3 emissions). (London Councils, 2021)
- For context, **scope 1** (direct and local, e.g. burning gas in boilers to heat homes and businesses or petrol/diesel vehicle emissions), and **scope 2 emissions** (indirect, e.g. from using electricity generated in another location) account for **680,000 tonnes of CO2e per year** (2005 – 2018 figures; BEIS, 2020).
- A circular economy can help to tackle consumption related (scope 3) emissions, and scope 1 and 2 emissions

Circular Economy Action Plan Overview

Development of our Circular Economy Action Plan



Action Plan Content

Our Circular Economy Action Plan was **developed to explore possibilities** for CE in Islington, and sets out:

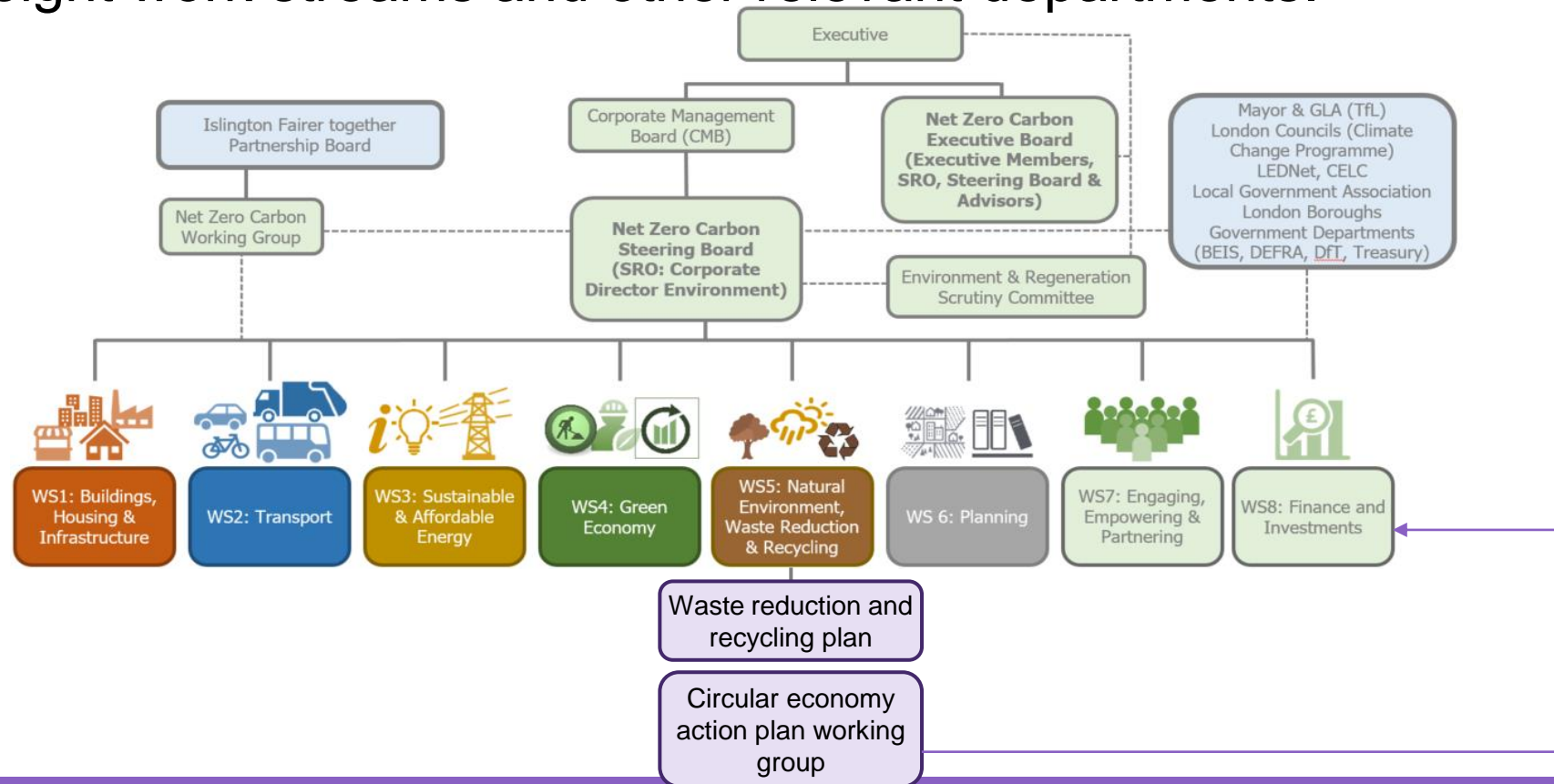
- how we will apply circular economy principles to our policies and strategies
- actions we are already taking
- additional actions we are committing to

The Plan focuses on eight areas broadly aligned with Vision 2030 priorities, and is:

- the start of the journey
- about embedding principles
- a foundation for action

Governance

- An internal working group has been established and actions are owned across NZC's eight work streams and other relevant departments.



Delivering the Circular Economy Action Plan through the Net Zero Carbon Programme

Circular economy is already in action in Islington

The following section provides a snapshot of what we have done already and what we will do next



Buildings, homes and infrastructure

We have

- Included circular economy requirements and KPIs focusing on refurbishment, flexibility of use, and recycling of waste materials in the New Homes Guide

We will

- Manage council assets based on longevity and flexible use, community benefit and sustainable refurbishment where required

Transport

We have

- Retrofitted our first e-RCV, with a second on order
- Provided support for car clubs and cargo bikes
- Reuse material in our road maintenance program

We will

- Retrofit eight eRCVs over two years
- Reduce our overall fleet size, move to electric and retrofit where appropriate

Sustainable and affordable energy

We have

- Delivered Bunhill 2 heat & power networks and are developing GreenSCIES

We will

- Work with partners to raise awareness of the circular economy and share best practice
- Celebrate circular economy at our Islington Sustainability Awards

Waste reduction and recycling

We have

- Delivered various reuse and waste minimisation initiatives
- Managed digital infrastructure on circular economy principles (cloud services, leasing, reuse)
- Opened our first 'Library of Things'

We will

- Investigate reusing more material more locally from our Reuse and Recycling Centre
- Investigate supporting more Library of Things, makerspaces and other sharing initiatives
- Support repair services directly and through communications and improving access and visibility
- Incorporate circular economy principles in a new Food Strategy

Green Economy & Planning

We have

- Required CE statements for large planning applications
- Launched CE grant scheme for SMEs

We will

- Progressive Procurement Policy to include specific CE requirements such as 'product as services'
- Inclusive Economy Team will support SME's aiming to be more 'circular'
- Celebrate CE at our Islington Sustainability Awards

Case study: circular economy grantees

- The council delivered a grant scheme in partnership with [ReLondon](#).
- 22 SMEs across a range of services were awarded £5-10k grants to help adapt to circular working practices.

CM Upholstery Ltd - 173 Stroud Green Rd, N4 3PZ	∨
E-scooter Ltd - 346 Caledonian Rd, N1 1DU	∨
Fair-Well (Jerilee & Claire Ltd.) - 16 Dartmouth Park Hill, NW5 1HL	∨
Fone Us London - 42 Junction Road, N19 5RD	∨
Fonthill R&K Ltd. - 134 Fonthill Road	∨
Gala Creations Ltd. - Goldsmiths Centre, EC1M 5AD	∨
Girasole - 150 Seven Sisters Rd, N7 7PL	∨
Goodmine (online)	∨
Housmans Bookshop Ltd. - 5 Caledonian Rd, N1 9DX	∨
Junee	∨
KIND2 Ltd. (Online)	∨
Look Mum No Hands - 49 Old St, EC1V 9HX	∨
Mer-IT Digital	∨

Engaging, partnering and empowering

We have

- Incorporate CE principles into our wider communications

We will

- Work with 'Anchor institutions' (Arsenal FC, NHS etc) to deliver CE actions in their organisations
- Support sharing schemes and deliver repair cafes at community centres
- Look to deliver more adult learning courses e.g. repair skills and DIY

Next steps

Ongoing review

- New initiatives – horizon scanning
- Learn lessons
- Internal and external awareness raising

Deliver, monitor and measure

- Bi-monthly working group and work stream delivery teams to ensure CE embedded and actions delivered
- Performance indicators to be developed

Update

- Publish new, updated Circular Economy Action Plan by April 2024